

SHAR 赛尔

2020 & SHARE UAV
Product Catalog





CONTENTS

■ Products

Cameras

- SHARE 102S Series
- SHARE 202S Series
- SHARE 6100

Survey Solutions

- Drone Survey Solution
- Data Process Software

■ Applications

■ Case Study

■ Services



SHARE UAV

Shenzhen Share UAV Technology Co., Ltd

Established in 2016, Share UAV designed drones, mapping cameras and data process software to improve work efficiency on drone surveying and mapping. We focused on oblique photogrammetry for years and designed few cameras to compatible with DJI drones, easy operation, high accuracy.



SHARE UAV Oblique Photogrammetry

Break through the traditional aerial survey technology, realize the advantages of multi-angle, large-range, high-precision and high-definition scenes and improve the mapping efficiency.



SHARE UAV Aerial Oblique Camera

Lightweight, strong structure, simple mounting, easy operation, all these features make the camera popular in market. With the data preprocessing software, whole workflow becomes quite efficient.



SHARE UAV Cooperate with many UAV Companies

Share AUV worked with DJI, launched PSDK series which is seamless docking on DJI drones, such as DJI Matrice 300 RTK. Besides, Share UAV cooperate with many UAV companies to finish all integration for high precision surveying with no GCPs used.

SHARE UAV Professional Mapping Camera



SHARE 102S Series

High Accuracy with
No GCPs Used

SHARE 102S
SHARE 102S Pro
SHARE PSDK 102S

- Upgraded Design : Lighter, smaller but higher precision
- Smart Working : Self-checking intelligent cooling
- Perfect Compatibility : Compatible with multiple drones
- Scientific Integration : Easy operation and efficient workflow



SHARE 202S Series

Full Frame, Long Focal Length

SHARE 202S
SHARE 202S Pro

- Full Frame Camera
- High Precision for various surveys and areas
- Compatible with multi-rotor, fixed-wing and VTOL
- Easy operation and efficient workflow

SHARE UAV Professional Mapping Camera



■ Survey with No GCPs Used

Say goodbye to ground control points, high accuracy and high efficiency

■ Real-time Image Transmission

The image of downward vision can be synchronized to ground station, everything under control.

■ OLED Display All Status

Share UAV is first one to equip OLED screen on oblique camera. This OLED can help user to know all status of camera, including camera ID, photo numbers, RTK signal and temperature.



SHARE 102S Series



	Pixels/ Lens	CNC housing	OLED screen	Independent POS data	J30J Port	SkyPort	Compatibility
SHARE 102S	24.3 MP	✓	✓	✓	✓		M600, VTOL, multi rotor
SHARE PSDK 102S	24.3 MP	✓	✓	✓		✓	DJI M210, M300
SHARE 102S Pro	24.3 MP	✓	✓	✓	✓	✓	DJI M210, M300, M600, VTOL, multi rotor

Camera

QTY of Lens	5 pcs
Focal Length	35 mm
Effective Pixels	24.3MP,total pixels ≥120MP
Sensor Size	APS-C (23.5mm x 15.6mm)
Pixel Size	6000 x 4000
Lens Angle	45 degree
Exposure Interval	≥0.8 s
Storage	1280 GB
Power Supply	SkyPort / J30J-15
Power On / Off	Auto On / Off

General

Operating Temperature	-10°C~50°C
Humidity	95%
Size	140 x140 x 80 mm
Weight	≤ 650 g



SHARE 202S Series



	Pixels/ Lens	CNC housing	OLED screen	Independent POS data	J30J Port	SkyPort	Compatibility
SHARE 202S	61 MP	✓	✓	✓	✓		M600, VTOL, multi rotor
SHARE 202S Pro	61 MP	✓	✓	✓	✓	✓	DJI M210, M300, M600, VTOL, multi rotor

Camera

QTY of Lens	5 pcs
Focal Length	56 mm x 440 mm x 1
Effective Pixels	42.4MP,total pixels≥210MP
Sensor Size	Full Frame(35.9 mm x 24mm)
Pixel Size	7952 x 5304
Lens Angle	45 degree
Exposure Interval	≥1.2 s
Storage	1280 GB
Power Supply	SkyPort / J30J-15
Power On / Off	Auto On / Off

General

Operating Temperature	-10℃~50℃
Humidity	95%
Size	160 x160 x 105 mm
Weight	1150 g

SHARE 6100



61 Million Pixels Full Frame Mapping Camera

- Lightweight, easy mounting
- SkyPort Connector, seamless docking with DJI drones
- Real-time image transmission
- Minimum exposure interval $\geq 0.8s$

Camera

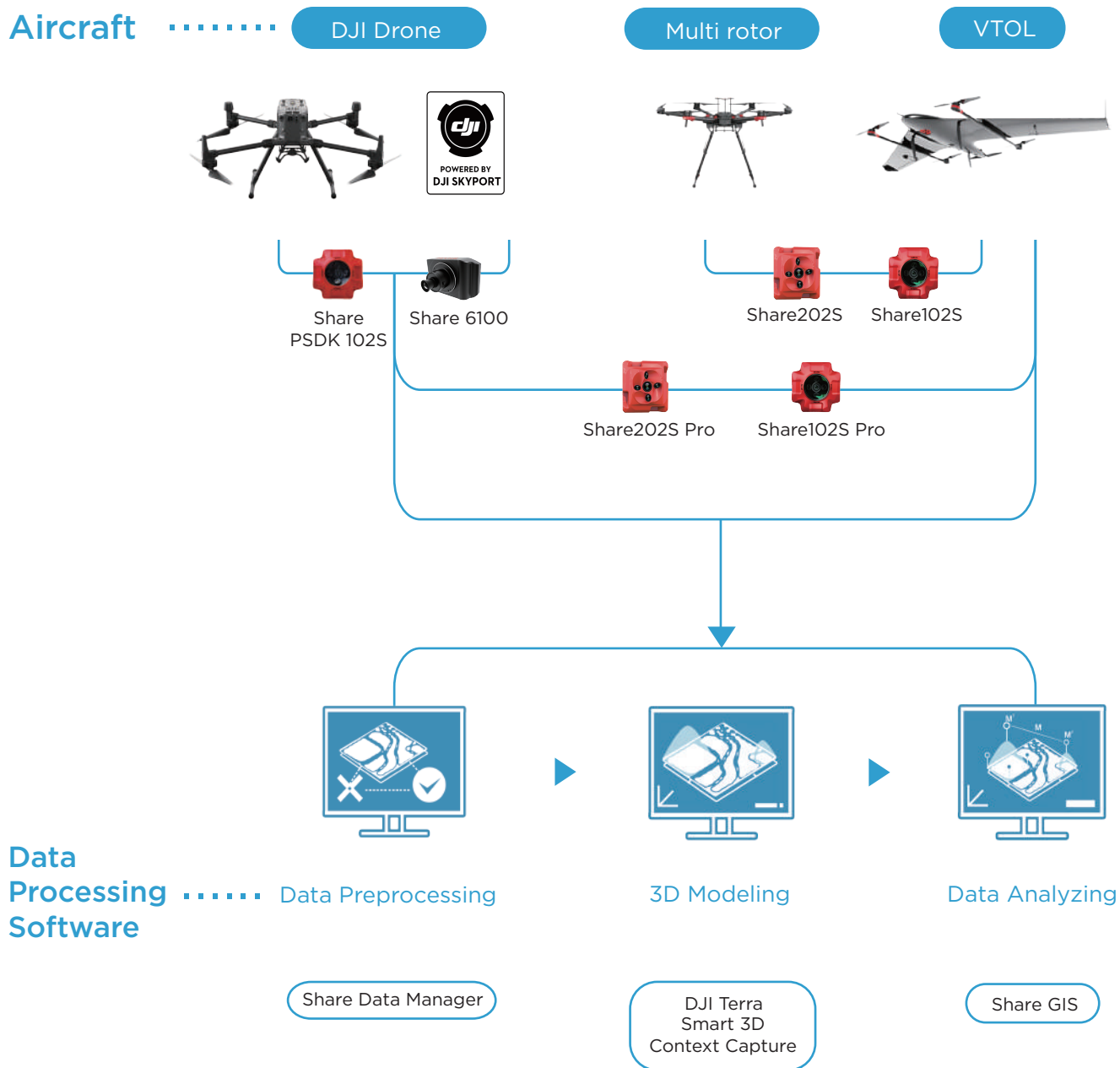
Focal Length	40 mm x 1 or 56 mm x 1 (Optional)
Effective Pixels	61MP
Sensor Size	Full Frame(35.7 mm x 23.8mm)
Exposure Interval	$\geq 0.8s$
Storage	256 GB
Power Supply	SkyPort
Power On / Off	Auto On / Off

General

Operating Temperature	-10°C~40°C
Humidity	95%
Size	136 x 76 x 61 mm
Weight	350 g

SHARE UAV One-Stop Drone Survey Solution

Share UAV provide one-stop drone survey solution to help enterprise user improve work efficiency and convert real scenes into digital assets.



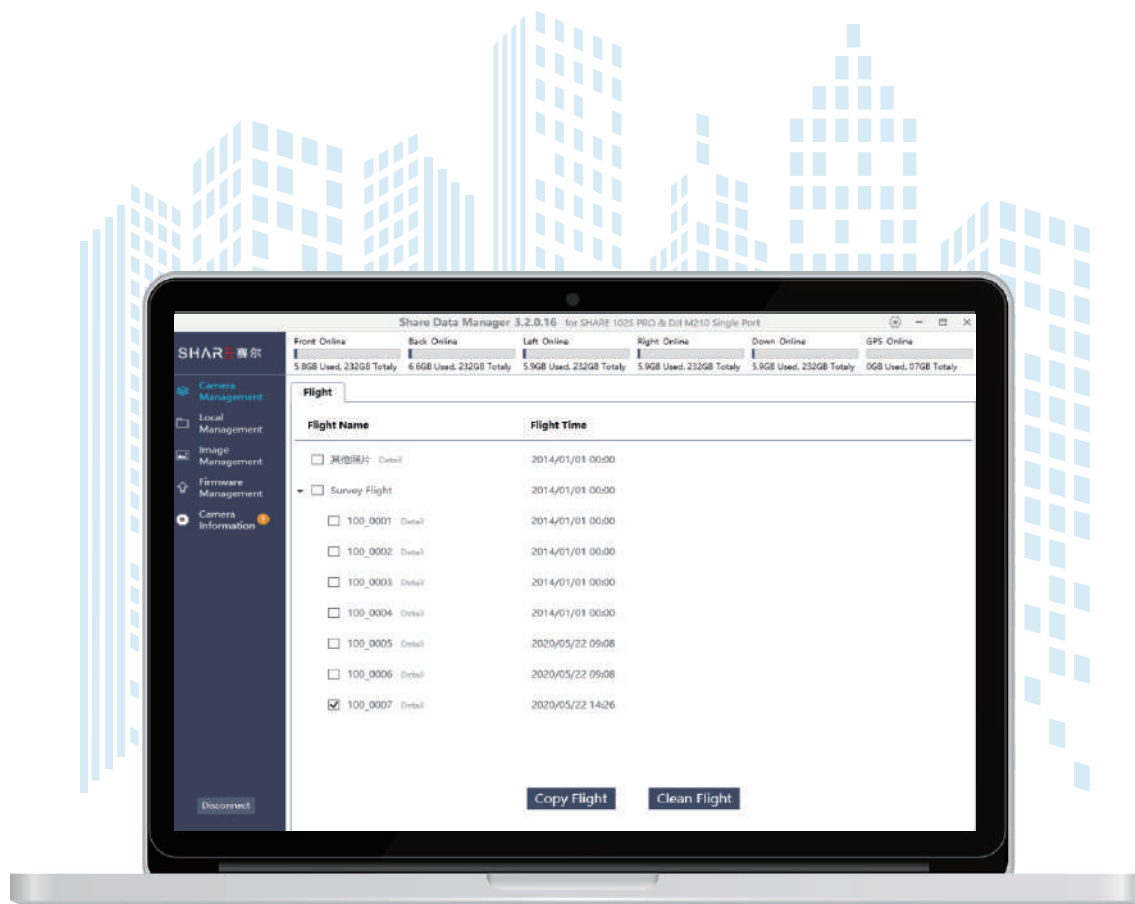
SHARE UAV Data Process Software

■ Share Data Manager

Preprocess data & Write POS information

Share Data Manager is an intelligent management software designed for high-efficiency, easy-operation data collation and data preprocess. The purpose is to help user to improve the workflow efficiency and simplify the procedure.

If you never used this kind of data preprocessing software, don't worry. Share Data Manager is quite simple to operate. One key to copy all data you need, easy and efficient. No longer need to spend a lot of time to process POS information.



SHARE UAV Applications



Cadastral Mapping



Smart City



Mining



Powerline Inspection



Earthworks Calculation



Buildings



River Management



Historic Site



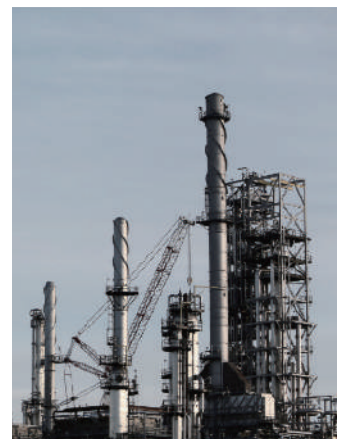
Road and Bridge



Forest Survey



Plot Plan



Pipeline and Railway

SHARE UAV Case Study



GSD: 3cm



GSD: 1.5cm



GSD: 1.5cm



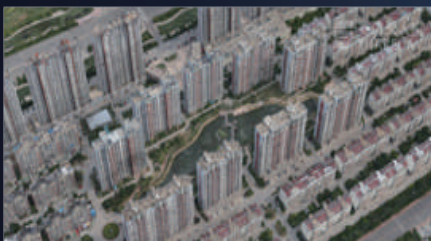
GSD: 3cm



GSD: 2cm



GSD: 1.5cm



GSD: 3cm



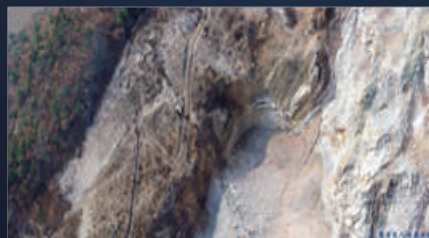
GSD: 3cm



GSD: 3cm



GSD: 3cm



GSD: 5cm



GSD: 2cm

SHARE UAV Services

■ Technical support

Share UAV provide technical support online to help user to solve any problems on time.

■ Product Maintenance

We provide products maintenance services to ensure the stable operation of product throughout its life cycle.

■ Feedback

We'd love to know your valuable suggestions, opinions and evaluations in any time.

We will serve you wholeheartedly.

